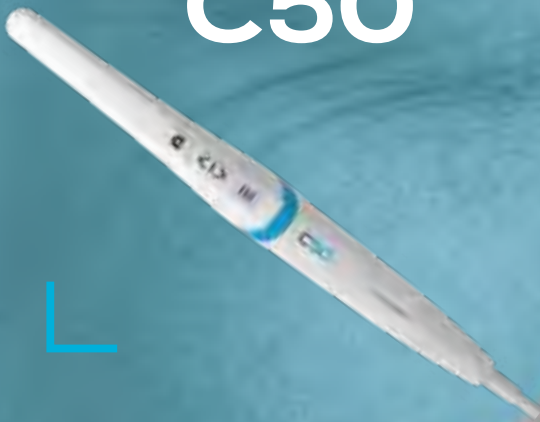


Intraoral camera

# YOUR VIEW. WHERE OTHERS CAN ONLY IMAGINE

Enhancing your workflows  
through innovation

C50



# Remarkable clinical vision

## FULL HD

Clear and detailed images

- A more **confident** final diagnostic
- Increased case **acceptance**

## VISION MODE

Transcript of natural colors

- **Straight forward** patient education
- Great for comparing teeth stain and **sharing it with patient**

## AUTO FOCUS

Gain of time & better image clarity

- **Easy to use**
- Improved **patient comfort**

## MACRO VISION

More visibility of fissures & caries

- **Easier** clinical evaluation
- **Enhanced communication** between clinician and patient

## DEPTH OF FIELD

5 camera shots\* available in ONE camera

- **User-friendly** product for an improved procedure
- **Quick switch:** from one position to another **in a second**

\*The 5 camera shots include macro, portrait, smile, tooth and intraoral



# All you need to see at your fingertips

Unprecedented vision with Daylight mode

- Improved interpretation of tooth shades with rendering of natural colors.
- A powerful support for controlling pathologies, post-treatment and facilitate the follow up process.



Exclusive macrovision performance

- Extreme visibility for ultra-precise diagnosis.



But also...

- Crystal clear vision with greater depth of field.
- A single camera for all shots: macro, intraoral, tooth, smile and portrait.



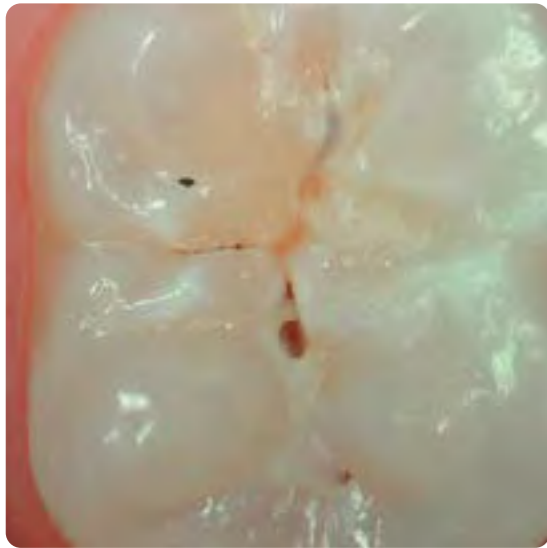
Improved patient follow-up

- More information about your patients: age, illnesses, diet, oral hygiene, etc.
- Lasting trust between you and your patients.

# Remarkable clinical versatility

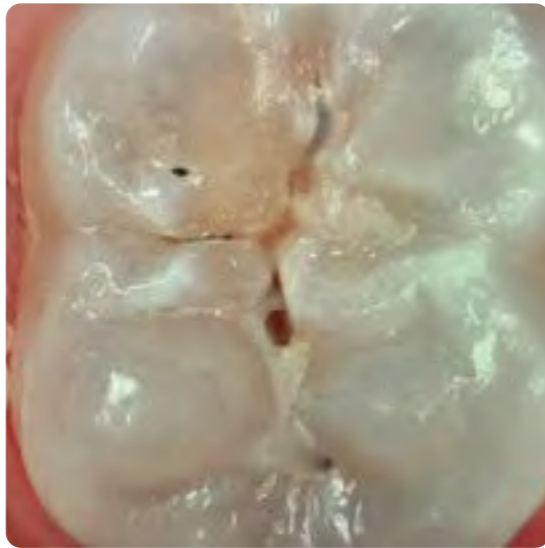
Vision modes for a detailed and more reliable diagnosis.....

## DAYLIGHT MODE



Record of **natural colors** for a better interpretation of tooth shade, pathology identification and patient follow-up.

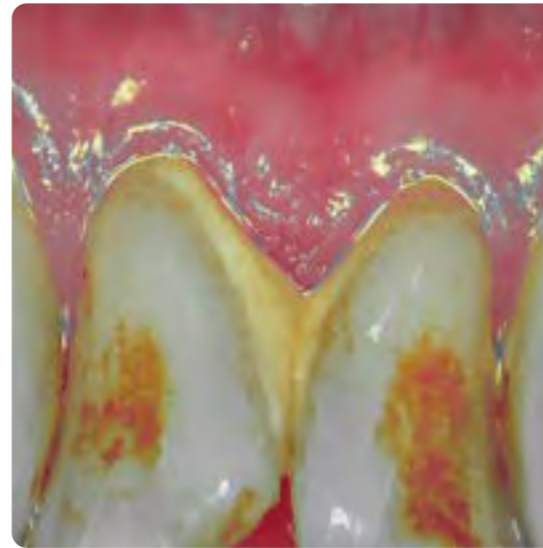
## DAYLIGHT+ MODE



**High contrasts** emphasizing anatomic fissures and details of the dentin structure/depth.

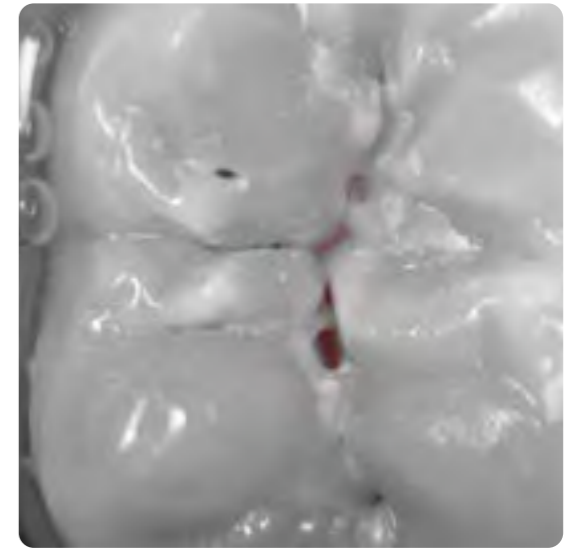
# A versatile system to access a large panel of cases

## PERIO MODE



Enhancement of **dental plaque and gingival inflammation** thanks to chromatic amplification.

## CARIO MODE



Caries **detection by fluorescence** technique by LEDs.

Camera modes for complete patient follow-up.....



## Daily dentistry follow-up

**Daylight or Diagnostic-Aid option** helps you visualize anatomical details that are invisible to the naked eye or with a mirror. These modes allow the dentist to show the difference between «before» and «after» care.



## Orthodontics follow-up

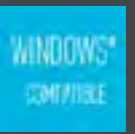
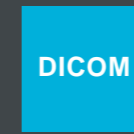
The portrait position turns off the LED light to capture the patient's facial or lateral side, ensuring the best orthodontics follow-up.



# Remarkable operational freedom

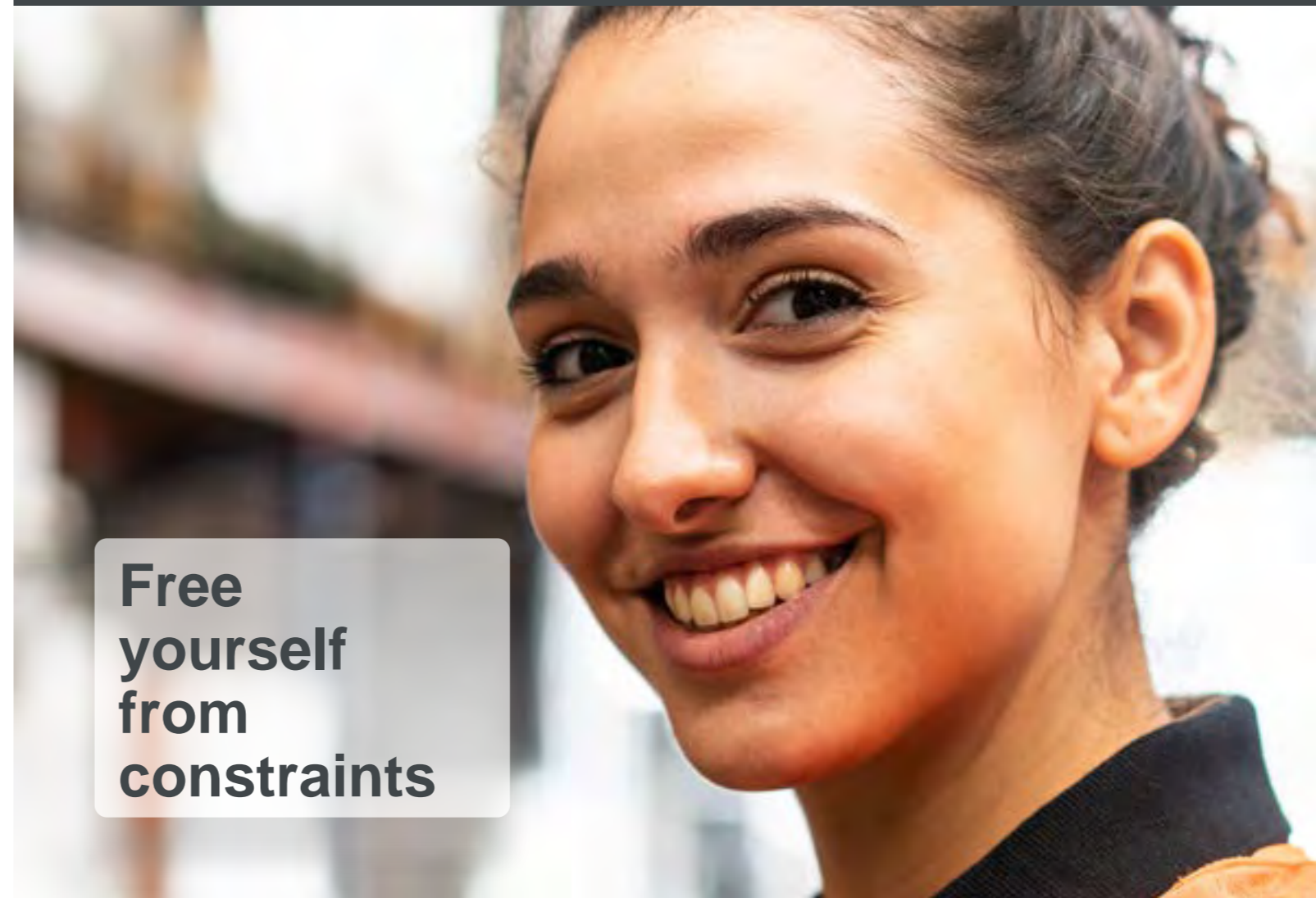


## Fully compatible



### Open to anyone

Easily integrated into any software, do not waste any more time installing support tools.



**Free yourself from constraints**

## Beyond the details

Patients become more involved as they quickly understand the importance of the suggested treatment.

Increase  
treatment  
acceptance

Highlight pathologies and explain clinical procedures easily. Facilitate dialogue to address objections and patient concerns.

Improved  
patient  
communication

Provide effective treatment planning by saving the images directly in the patient record. Easily compare images from previous patient visits and monitor progress.

**Confident**  
patient  
relationship

**Empowering you  
to focus on what  
matters the most:  
your patients**





# About Caries Detection workflow

With ACTEON®'s caries detection product portfolio, you can implement an efficient caries detection and treatment workflow. It also helps you communicate more successfully with your patients and increase confidence.



## Detect & diagnose

I see a large number of patients every day, so my practice requires that me and my team stays on top of its productivity.



### C50

C50 intraoral camera is the perfect companion for non-invasive and reliable caries detection, thanks to its fluorescent technology



## Treat

I need to make my treatment as efficient and minimally invasive as possible for my patients.



### newtron

With its controlled linear vibrations and frequency adjustment, Newtron® P5XS B.LED allows precise treatments and preserves tissues. It makes the treatment more comfortable for both the patient and yourself.



## Follow-up

I need to be able to do the proper follow-up on my procedures while minimizing the radiation exposure for my patients.



### x-mind unity

### sopix plug-in

I can provide the most complete follow-up at the lowest dose to my patients thanks to my X-Mind® unity with Sopix Plug-in and the ACE technology



## Protect

I need to ensure optimal clinical protection for my patients and limit the risk of cross-contamination.



### riskontrol

Riskontrol® disposable tips are your must-have solution to perform dental care in a safe and clean place. It assures protection, comfort and safety in every daily clinical procedures.



## Camera specifications

|  |   |
|--|---|
| <b>Sensor</b>                                | CMOS  |
| <b>Resolution</b>                            | 1920 x 1080px   |
| <b>Sensitivity</b>                           | 2 lux   |
| <b>Frame per second (FPS)</b>                | 25 – 30   |
| <b>Aspect ratio</b>                          | 16/9  |
| <b>Lighting</b>                              | 6 white LEDs and 2 blue LEDs  |
| <b>Focus adjustment</b>                      | Automatic focus or Single focus   |
| <b>4 Visions mode</b>                        | DAYLIGHT mode<br>If option enabled: DAYLIGHT+ mode, PERIO mode and CARIO mode |
| <b>Depth of field</b>                        | From portrait to macro  |
| <b>Image capture</b>                         | Capture button or footswitch (optional)                                       |
| <b>Angle of view</b>                         | 75°   |
| <b>Cable length</b>                          | 3m  |
| <b>USB output</b>                            | 3.0   |
| <b>Consumption</b>                           | 4.5W max  |
| <b>Handpiece dimensions</b>                  | L: 200; W: 30; H: 24mm  |
| <b>Handpiece weight</b>                      | 100g  |
| <b>International Protection Marking (IP)</b> | Dust & waterproofness protection IP53   |

## Computer Configuration Requirements

| Computer requirements   | Specs  |
|-------------------------|--|
| <b>CPU</b>              | Intel Core i5 4 core 2GHz Gen 8 or greater and Apple M1 or greater |
| <b>RAM</b>              | 8GB  |
| <b>USB version</b>      | 3.0 or greater   |
| <b>USB chipset</b>      | Intel or Renesas   |
| <b>Operating system</b> | from Windows 10 PRO 64 bits or macOS Catalina                      |

Class I medical device for dental care. CE. For professional dental use only.  
This medical device is not refunded by health insurance organizations. Read carefully the instructions before use.  
Manufacturer: Sopro® ACTEON® Group (France)  
Date of modification: March 2023





## **SOPRO**

A company of ACTEON® Group

**ZAC Athélia IV,  
avenue des Genévriers,  
13705 LA CIOTAT, France**

**Tel. +33 (0) 442 980 101  
Fax. +33 (0) 442 717 690**

**[info@acteongroup.com](mailto:info@acteongroup.com)**

Follow-us

