



# Midmark **VetAssure™** Sterilizers



B 23  


**ROSI**  
Reverse Osmosis Steam Injection  
**TECHNOLOGY**

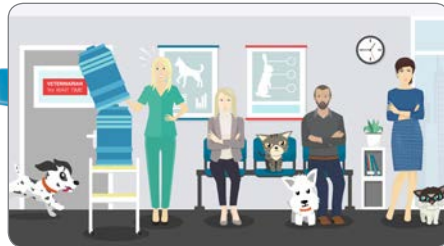
Connect. Flow. Save.



# Better Patient Care. Better Business.™



Is it slow & unreliable?



Frustrated with manually filling your sterilizer?

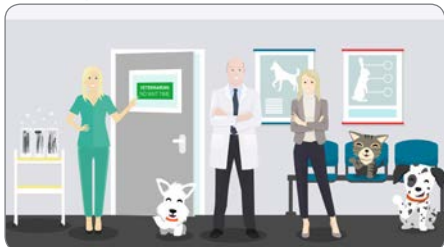


Meet VetAssure™ - designed with vets, veterinary nurses & patients in mind.



VetAssure™ has all the answers.

- ✓ Great for the vet
- ✓ Great for the veterinary nurse
- ✓ Great for your patients



## ✓ Reliable

Midmark sterilizers are renowned for their outstanding reliability. Coupled with highly-trained engineers who provide technical support, on-going training to your practice staff and validation services, you will experience some of the best reliability in the business with VetAssure.™

## ✓ Fast

Now with patented **QUIKSTEAM™** technology as standard, you can expect completed Class B cycles to be up to 20% faster than previously.



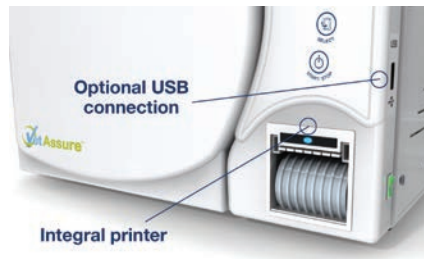
## ✓ Innovative

VetAssure™ is the result of continuous feedback from our customers to our experienced research and development team, who are forever striving to provide our customers with the best quality components and technology for today's instrument processing needs.

\* Total cycle times subject to operating conditions.

## Traceability

Every VetAssure™ has an integral printer as standard providing a hard copy of parameters for every cycle run. A USB connection is an option for those requiring downloadable cycle records.



## Longevity

VetAssure™ sterilizers are now additionally protected by the inclusion of a water conductivity meter, as standard. The quality of the purified water is therefore constantly monitored and relayed to the user, further enhancing reliability.



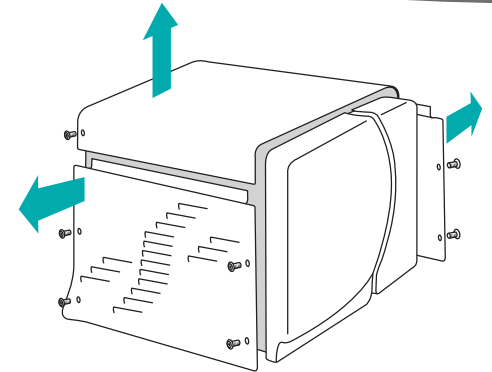
## Productivity

Maximise productivity by scheduling your test cycle up to 24 hours in advance, so your unit is warmed up and ready to go first thing in the morning, improving productivity and taking advantage of energy use during quieter periods.



## Serviceability

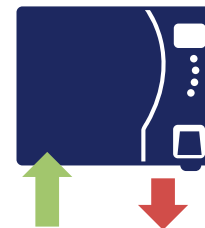
A new, sleek, three piece cover increases the serviceability of the unit for preventative maintenance and annual validation.



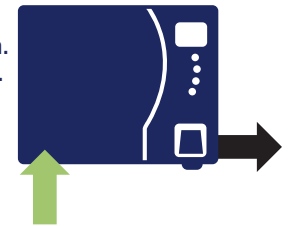
## Flexibility

Good quality steam can only be produced if good quality water is used in its generation. That's why Midmark VetAssure™ sterilizers offer a range of flexible water solutions to assist you in consistently feeding the unit with water of the desired quality.

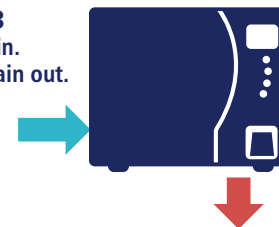
**Option 1**  
Manual feed in.  
Manual drain out.



**Option 2**  
Manual feed in.  
Auto drain out.



**Option 3**  
Auto feed in.  
Manual drain out.



**Option 4**  
Auto feed in.  
Auto drain out.



# ROSI

Reverse Osmosis Steam Injection  
TECHNOLOGY

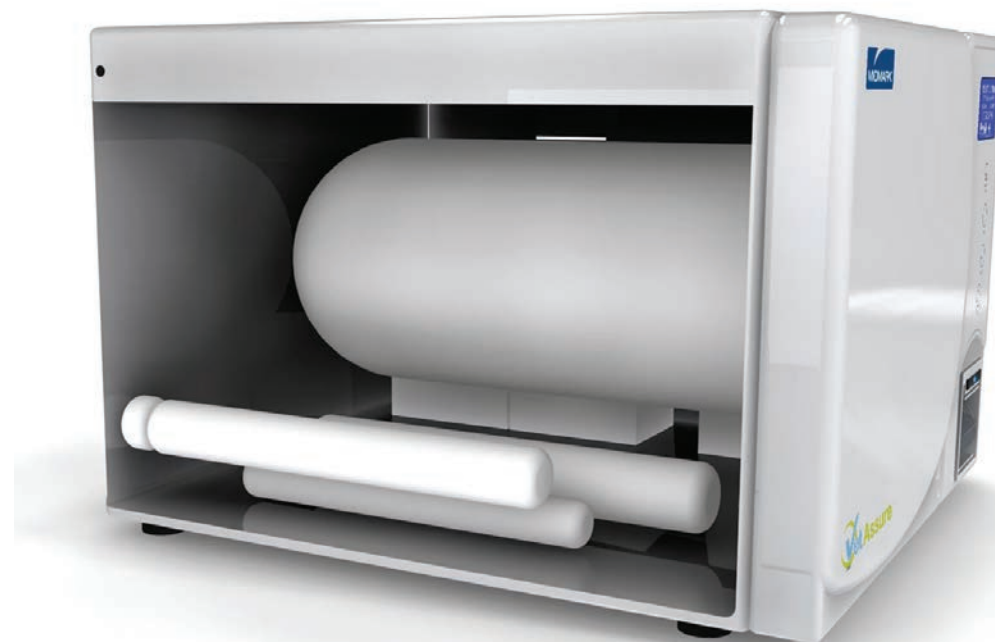
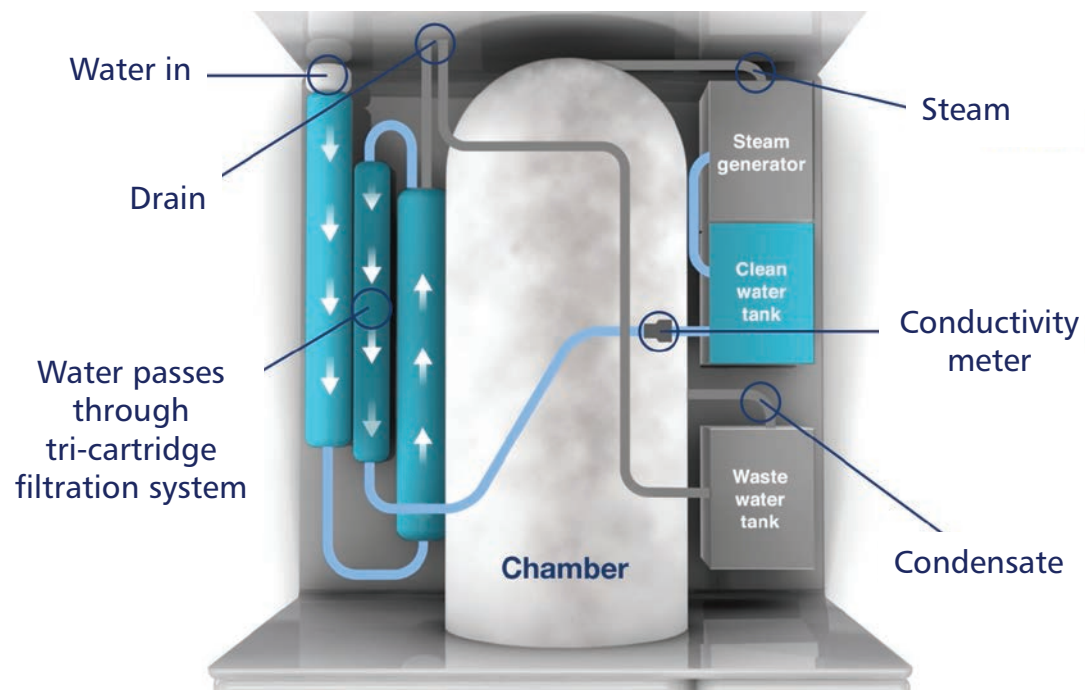
ROSI is an optional integrated tri-cartridge water purification system, which connects directly to your practice water supply.

*Connect. Flow. Save.*



- ✓ No manual filling
- ✓ Cost effective
- ✓ Saves time
- ✓ Purified water on demand

Save time. Save energy. Save money.



For illustrative purposes only.





## More about Midmark

- Market leaders for dental sterilizers in the USA.
- We are a proud fourth generation, family owned company from Ohio, USA, who together celebrated our centenary in 2015.
- Over 1800 talented, experienced teammates worldwide, supplying world leading customer care to our distributors and customers wherever they are.

## Table of Cycles\* **QUIKSTEAM™**

Thanks to our QuikSteam™ patented technology, you can expect cycle times up to 20% faster for Class B loads.



| Cycle Type                       | 121°C      | 134°C |
|----------------------------------|------------|-------|
| Hollow** wrapped                 | ✓          | ✓     |
| Solid wrapped                    | ✓          | ✓     |
| Delicate wrapped                 | ✓          | ✗     |
| Prion                            | ✗          | ✓     |
| Porous wrapped                   | ✓          | ✓     |
| Fast - unwrapped                 | ✓          | ✓     |
| Bowie & Dick or Helix Test Cycle | ✗          | ✓     |
| Vacuum Test Cycle                | ✓ at <40°C |       |

\*\* Type A & B hollow instruments in accordance with EN 13060

### The Midmark VetAssure™ Class B is in compliance with:

|                |   |
|----------------|---|
| 93/42/CE       | Medical Device Directive (MDD)  |
| 2014/68/UE     | Pressure Equipment Directive (PED)  |
| ISO 13485      | Medical Device: Quality Management System (QMS)   |
| 2012/19/UE     | Waste Electrical and Electronic Equipment (WEEE)  |
| EN 13060       | Small Steam Sterilizer  |
| IEC 61010-1    | Safety prescriptions for electrical, measuring, control, and laboratory equipment                                 |
| IEC 61010-2-40 | Safety prescriptions for sterilizers and disinfectors used for treating medical devices                           |
| EN 61326-1     | Electrical equipment for measurement, control and laboratory use - Prescriptions of electromagnetic compatibility |

\* Total cycle times subject to operating conditions. A full list of typical cycle times is available on request.

| Dimensions         | B18 | B23 |
|--------------------|-----|-----|
| Depth (mm)         | 610 | 695 |
| Width (mm)         | 505 | 505 |
| Height (mm)        | 400 | 400 |
| Chamber depth (mm) | 381 | 530 |
| Weight (empty) Kg  | 56  | 60  |

## Standards 0051

We know your standards are high and so are ours.

All our sterilizers are manufactured to EN 13060 and CE marked in accordance with the Medical Devices Directive and Pressure Equipment Directive.





Because we care.

Tel: +39 0522 875 166  
[newmed.sales@midmark.com](mailto:newmed.sales@midmark.com)  
[www.midmarkvetemea.com](http://www.midmarkvetemea.com)

Midmark EMEA Ltd, Beech House, First Floor, East Wing,  
Ancells Business Park, Fleet, Hampshire, GU51 2UN  
Tel: +44(0) 1252 360 940 [hello@midmark.com](mailto:hello@midmark.com)

Manufactured by: Newmed Srl - a Midmark Company, Via Lenin 79/A,  
42020 Quattro Castella, Reggio Emilia, Italy.  
Tel: +39 0522 875 166 Fax: +39 0522 243 096

